



FC206

**LE COIN SOLEIL TOWER ROAD, ST. HELIER, JERSEY,
JE2 3HR**

Asking Price

£799,000

FINE & COUNTRY
JERSEY

Property details

FREEHOLD - Situated ideally on the outskirts of St Helier, this semi-detached 3/4 bedroom residence, in close proximity to all amenities, stands as an ideal family home. The ground floor of this property features a spacious entrance hall, kitchen, a spacious living room/diner, sunroom, home office, utility room, and a convenient WC. Ascending to the first floor, you'll find the principal bedroom with an en-suite shower room, two additional double bedrooms, and a generously sized house bathroom.

Externally, a south/west-facing garden and rear patio, accessible from the sunroom, offer a delightful outdoor space. The property is further enhanced by a detached garage and parking for two additional cars.

Given its exceptional attributes, early viewing is highly recommended by the vendors' sole agents, presenting an unmissable opportunity for those seeking a fantastic family home in a prime location.

Outside

South/west facing enclosed garden.

Detached garage.

Parking to the front for 2 cars.

Services

All mains.

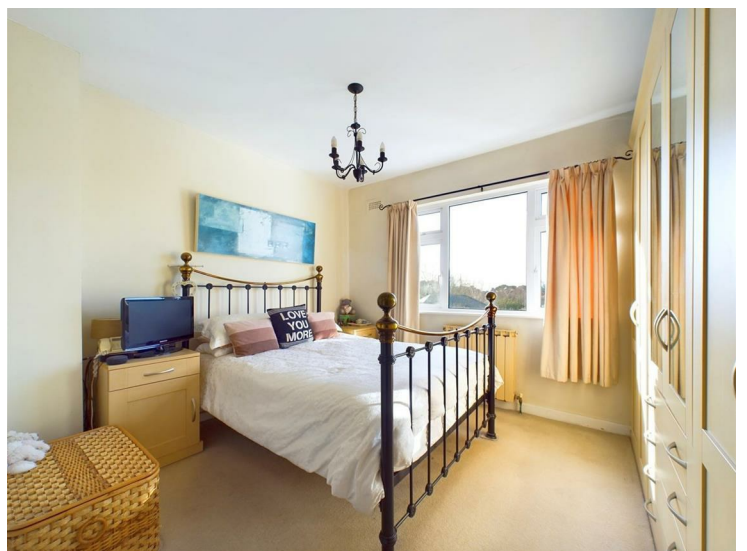
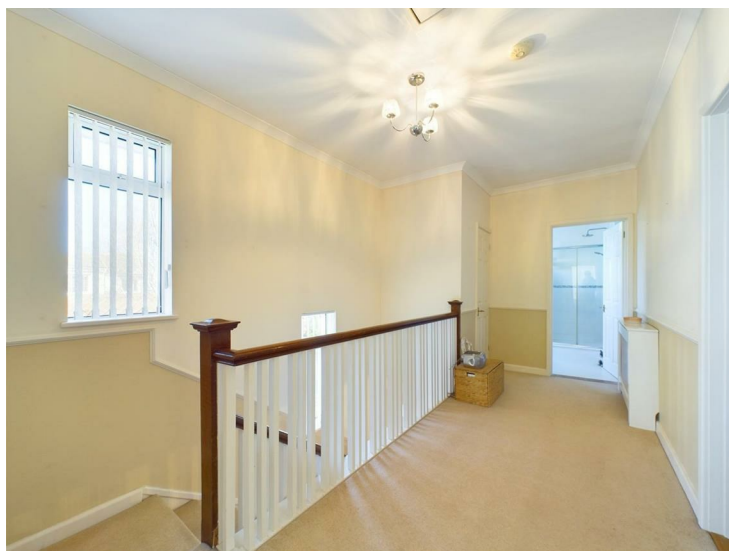
Oil Fired Central heating.

Double glazing.

Fibre broadband.

Directions

When you get to the very top of Tower road turn left Richelieu Park & St Annes terrace and the property is immediately on the right.





Approximate total area[®]
1518.52 ft²

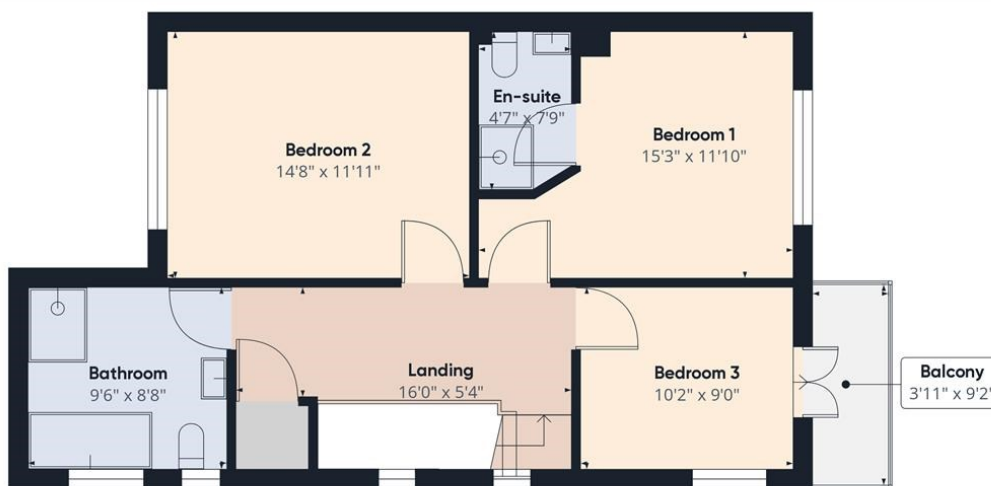
Excluding balconies and terraces

While every attempt has been made to ensure accuracy, all measurements are approximate, not to scale. This floor plan is for illustrative purposes only.

GIRAFFE360



Ground Floor



Floor 1

Call us on

01534 888855

jersey@fineandcountry.com

www.fineandcountry.je

5 King Street, St Helier, Jersey, JE2 4WF

Agents Note: Whilst every care has been taken to prepare these particulars, they are for guidance purposes only. All measurements are approximate and are for general guidance purposes only and whilst every care has been taken to ensure their accuracy, they should not be relied upon and potential buyers are advised to recheck the measurements.